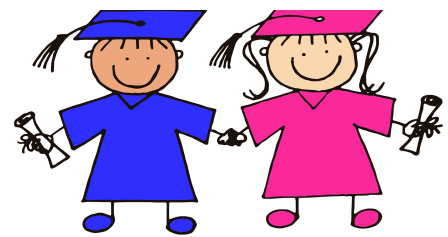


Wee Achievers Preschool Enrollment Contract



Revised 03/19

This contract and related enrollment forms must be signed by parents/guardians prior to student entering school.

FEES

The non-refundable deposit will be credited to the first month's fees. If a child is enrolled on any other date than the first school day of the month, the tuition for that month will be prorated based on the number of school days left. All tuitions are charged a flat monthly rate; there are no vacation, sick, or holiday fee scales.

Wee Achievers Preschool will give at least a 30-day written notice to families of any changes in fees.

TUITION PAYMENTS

Upon enrolling, the Registration Fee, School Supplies Fee, and the 1st Month's tuition fee are due prior to your child's entry date. Thereafter, all tuition fees are due on or before the 1st of each month for that month's enrollment. Full tuition is due whether or not your child is in attendance every day.

Tuition not received on or before the 1st or within the 5-day grace period will be assessed a late fee. Monthly billing statements are NOT provided.

Payments may be made by check, money order, or cash at the preschool site. Please save monthly receipts for tax purposes.

- **First month's tuitions must be received by July 1st (Fall Enrollment)**
- Please include your child's name when making a payment

LATE PAYMENT/RETURNED CHECKS

Any tuition payment not received by the 1st of the month or within the 5-day grace period is considered delinquent and will be assessed a \$25 late payment fee. Post-dated checks do not constitute timely payments.

Accounts with returned checks will be assessed a \$25 fee. Returned checks will not be re-deposited. A money order, including the \$25 fee, must be received no later than three business days following notification of the returned check to ensure continued enrollment.

SUSPENSION

A child may be suspended if tuition is not received within the 5-day grace period. The child will not be allowed to return to school until the delinquent fees are paid. Repeated suspension and/or a child remaining on suspension for more than a month may be subject to disenrollment.

Parent(s)/Guardian(s) will be financially responsible for all unpaid tuition and fees up to the date of disenrollment.

